



OCTOBER

17

International Day
for the

**ERADICATION OF
POVERTY**



sjbipp



sjbipp



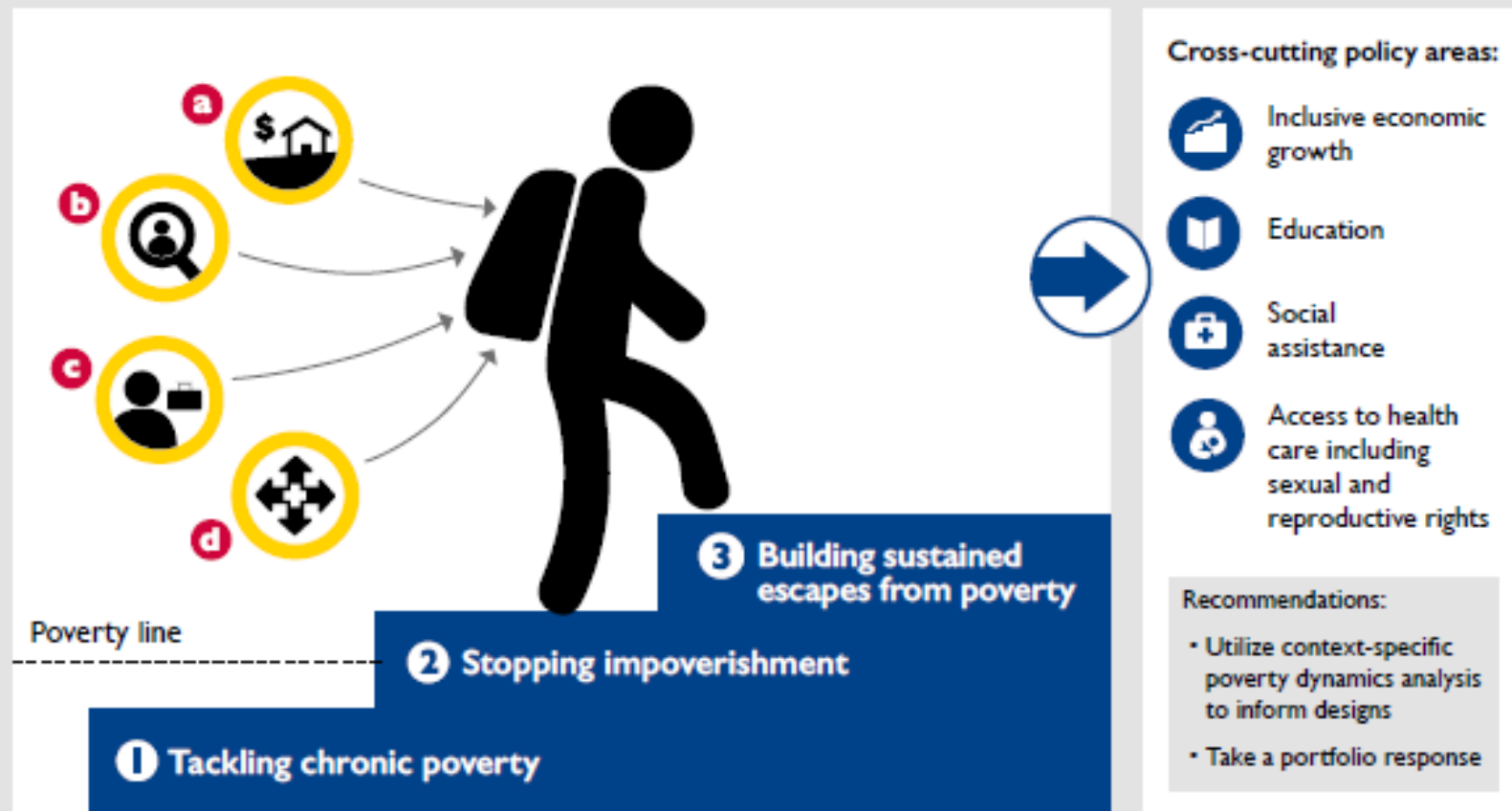
sjbippNetsol



WWW.SJBIPP.ORG

SUSTAINABLE POVERTY ESCAPES: PROGRAMMING IMPLICATIONS

Promoting sustainable escapes from poverty means...



...and developing programmes and policies in frequently neglected areas, including...

a Promote the rural non-farm economy



Alongside agricultural market development, stimulate growth in RNFE (trade, manufacturing, tourism, transport, mining, etc); ensure supportive policy framework for local enterprises; build demand for products and services through secondary town development and social protection; rural electrification and transport.

b Strengthen rural labour markets



Through focusing on workers, not just producers, support improvements in quantity, quality, and access. Support labour-intensive industries; target market information and wage monitoring; labour-market tightening through family planning and keeping children in school.

c Support safe and fair migration



Address negative attitudes to migrants; make social security portable; regulate labour contractors; access to appropriate finance; provision of information on opportunities and risks.

d Increase coverage of adequate social assistance and social insurance



Include programmes for the working age population; index benefits against inflation; subsidise premiums of the poorest.